

The Status of Infants in Foster Care

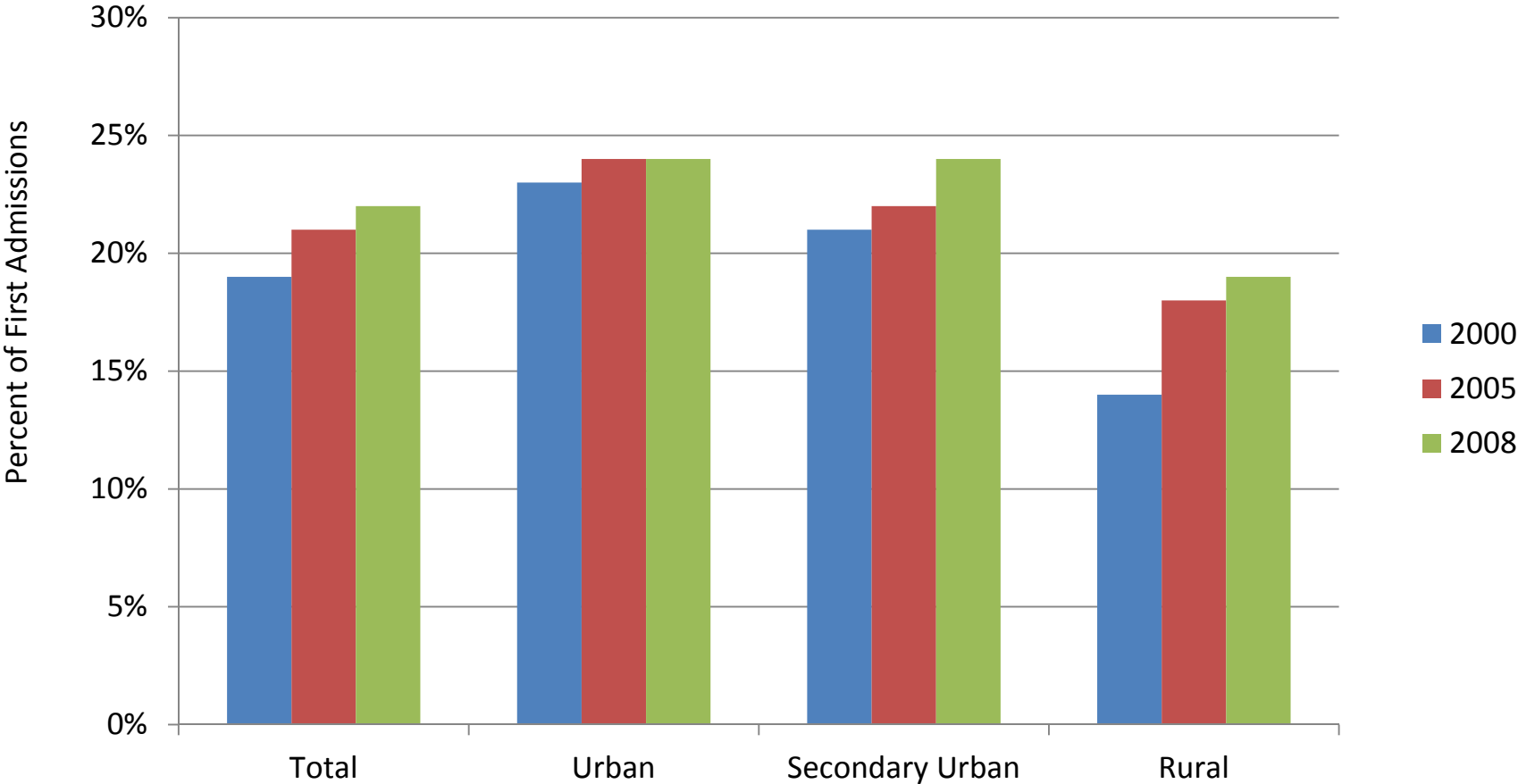
Data from the Multistate Foster Care Data Archive and NSCAW

Fred Wulczyn
Michelle Ernst
Lijun Chen

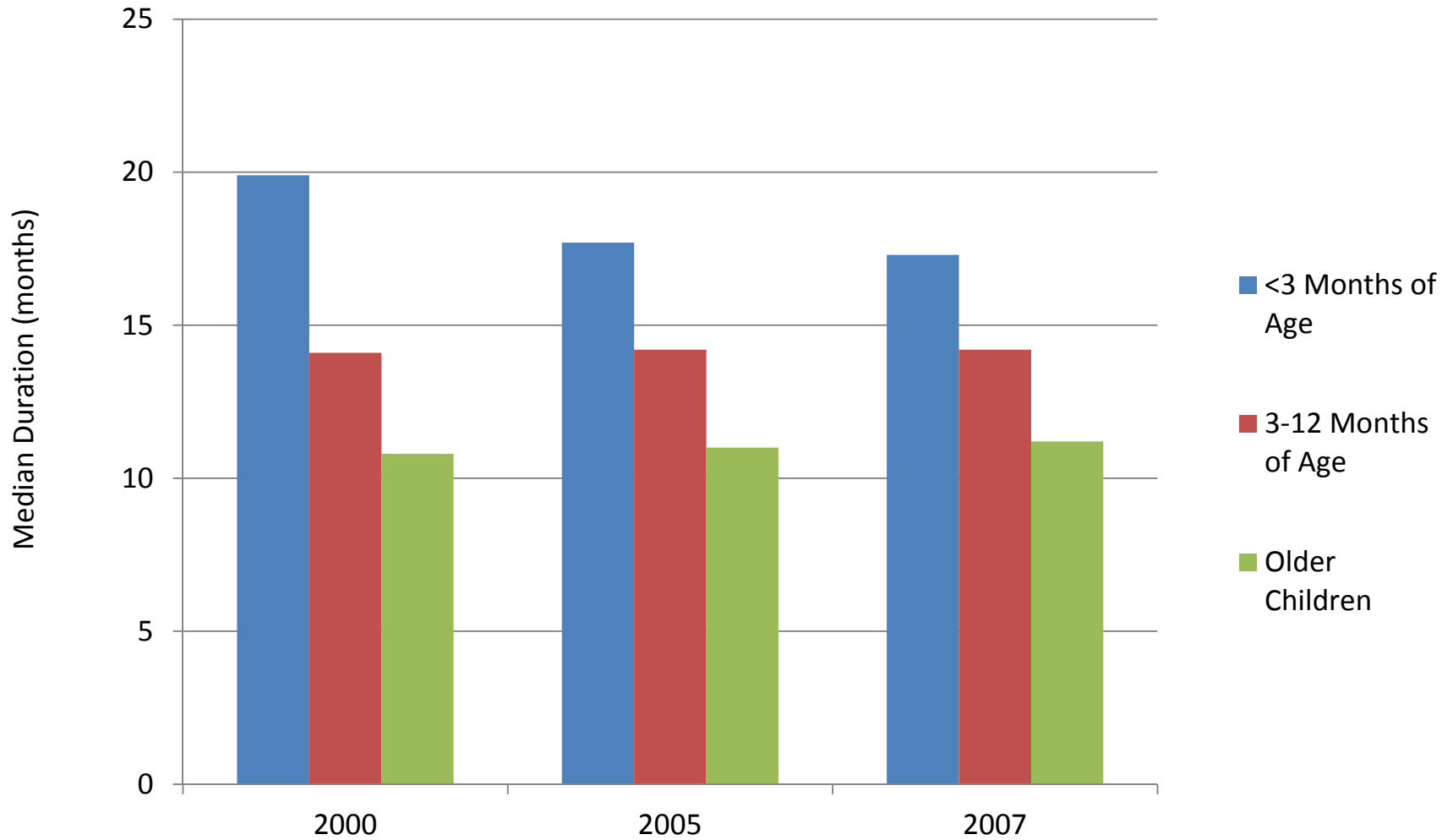
April 18, 2012



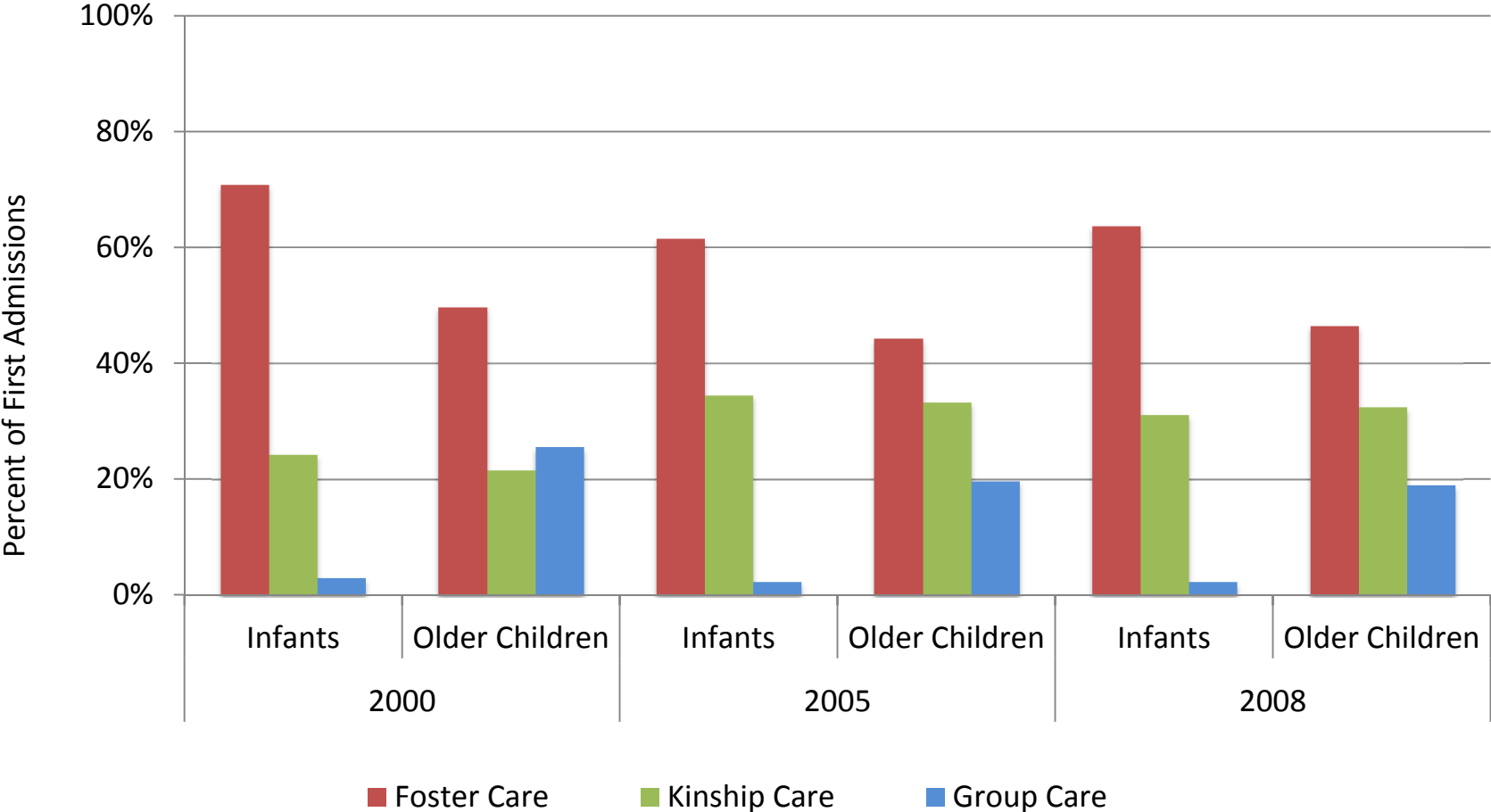
Infants are a growing proportion of first-time admissions to foster care.



Younger infants spend longer periods of time in foster care.



Infants are more likely to be placed in family care than older children.



Infants are more likely to be adopted, and approximately half of all adoptions are of children who entered care under age 1.

Age at Admission	Admissions	Discharges	Reunification	Relative	Adoption	Other Exits	Still-in-Care
All ages	473,567	421,463	217,033	67,152	75,540	61,738	52,104
0 to < 3 mo	59,619	52,190	16,468	7,286	25,690	2,746	7,429
3 m to < 1 yr	36,756	32,635	15,441	5,942	9,589	1,663	4,121
1 thru 17 yr	377,192	336,638	185,124	53,924	40,261	57,329	40,554
All ages	100%	89%	46%	14%	16%	13%	11%
0 to < 3 mo	100%	88%	28%	12%	43%	5%	12%
3 mo to < 1 yr	100%	89%	42%	16%	26%	5%	11%
1 thru 17 yr	100%	89%	49%	14%	11%	15%	11%
All ages	100%	100%	100%	100%	100%	100%	100%
0 to < 3 mo	13%	12%	8%	11%	34%	4%	14%
3 mo to < 1 yr	8%	8%	7%	9%	13%	3%	8%
1 thru 17 yr	80%	80%	85%	80%	53%	93%	78%

Table 1. Characteristics of Infants and Older Children in Out-of Home Care

		Infants		Children	
		Number	Percent	Number	Percent
Race/Ethnicity	White	129	30%	410	48%
	Black	190	39%	396	33%
	Hispanic	81	21%	152	13%
	Other/Missing	39	10%	72	6%
Child Health Status	Excellent	153	39%	347	34%
	Very Good	116	22%	355	39%
	Good	99	22%	241	18%
	Fair/Poor	69	19%	87	10%
Child Health Insurance	Private, self-pay, other	25	5%	130	21%
	Medicaid and State Programs	412	95%	900	79%
Child Abuse Type	Physical neglect – failure to provide	213	46%	259	21%
	Neglect – no supervision, abandon	68	16%	246	28%
	Emotional, Sexual, Moral Maltreatment	16	5%	209	16%
	Physical maltreatment	67	11%	182	20%
Gender	Male	216	47%	485	47%
	Female	221	53%	545	53%
Chronic Health Condition	Yes	119	28%	180	14%
	No	318	72%	850	86%

Table 2. Characteristics of Families of Children in Out-of-Home Care

		Infants		Children	
		Number	Percent*	Number	Percent*
Prior Involvement with Child Welfare	Yes	262	65%	705	66%
	No	135	27%	233	23%
Caregiver Drug / Alcohol Abuse	Yes	269	61%	469	41%
	No	119	29%	427	45%
Prior/Active Domestic Violence	Yes	172	46%	409	37%
	No	197	40%	499	50%
Difficulty Paying Necessities	Yes	226	57%	432	39%
	No	146	31%	467	50%
Caregiver Recent Arrests	Yes	165	43%	280	24%
	No	193	44%	565	52%
Child with Special Needs/ Behavior Problem	Yes	105	25%	404	33%
	No	286	68%	523	56%
Caregiver Serious Mental Health Problem	Yes	181	42%	377	28%
	No	182	44%	482	55%

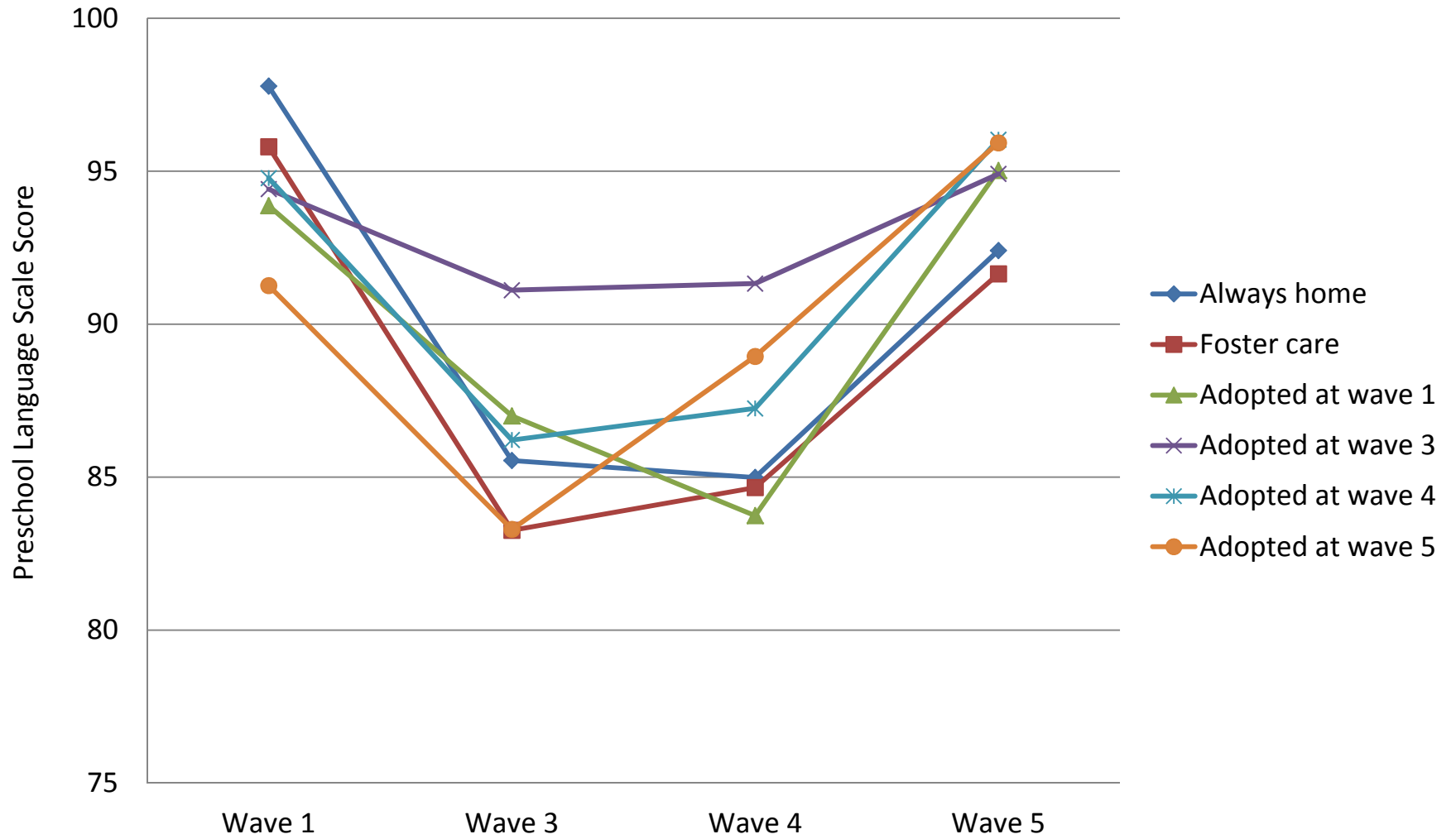
Table 3. Characteristics of Infants' and Older Children's Caregivers

		Infants		Children	
		Number	Percent*	Number	Percent*
Caregiver Intelligence/Cognitive Impairment	Yes	71	15%	131	9%
	No	300	71%	745	75%
Caregiver Unrealistic Expectation of Child	Yes	139	29%	492	38%
	No	229	57%	382	46%
Caregiver Poor Parenting Skill	Yes	307	70%	754	69%
	No	76	18%	165	19%
Caregiver Excessive Discipline of Child	Yes	44	13%	318	26%
	No	336	75%	575	60%
Caregiver High Stress in Family	Yes	322	79%	694	62%
	No	59	10%	224	26%
Low Social Support	Yes	220	46%	489	46%
	No	171	45%	420	42%
Caregiver History of Child Abuse/Neglect	Yes	191	48%	353	28%
	No	195	42%	536	56%

Table 4. Neighborhood Context and Placement Setting

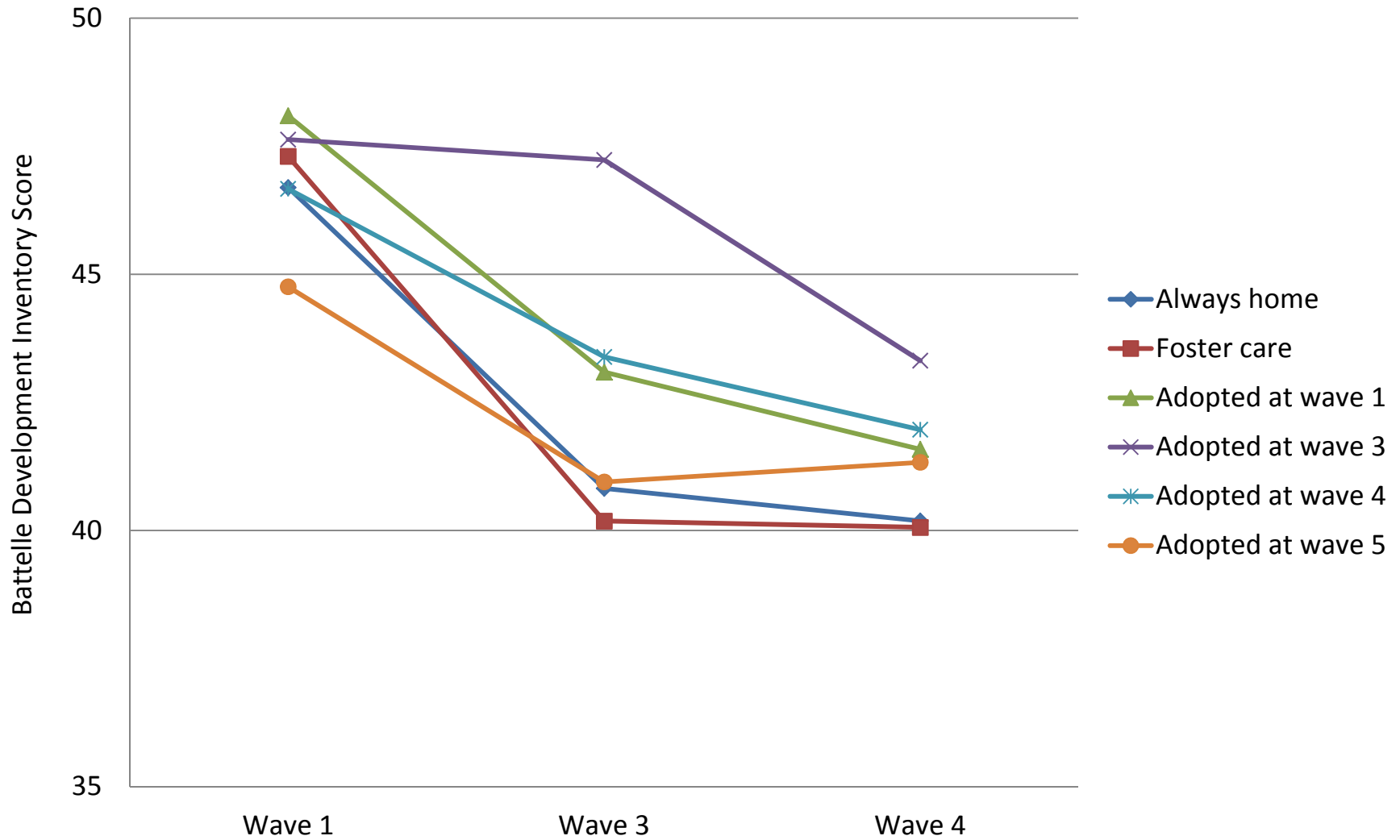
		Infants		Children	
		Number	Percent	Number	Percent
Neighborhood Quality	No Serious Problem	399	90%	931	88%
	Serious Problem	38	10%	99	12%
Urbanicity of PSU	Non-urban	49	16%	750	16%
	Urban	388	84%	880	84%
Child Service Setting	Foster Home	260	53%	476	36%
	Kin Care Setting	163	45%	409	45%
	Group Home/ Res Program	7	1%	97	10%
	Other OOHC Arrangement	7	1%	48	9%

Figure 1. PLS Scores at Each Wave for Children of Different Adoption Status



Note: The score values are estimates from the multivariate mixed model.

Figure 2. BDI Scores at Each Wave for Children of Different Adoption Status



Note: The score values are estimates from the multivariate mixed model.