

Infant-Toddler Court Program National Resource Center

Integrating Infant and Early Childhood Mental Health into Child Welfare



Safe Babies
A Program of ZERO TO THREE™



Infant-Toddler Court Program National Resource Center

The National Infant-Toddler Court Program was made possible through the support of the Health Resources and Services Administration (HRSA) of the U.S. Department of Health and Human Services (HHS) as part of an award totaling \$8,820,638 with 0 percent financed from non-governmental sources.

The contents are those of the authors and do not necessarily represent the official views of, nor an endorsement by, HRSA, HHS, or the U.S. Government. For more information, please visit [HRSA.gov](https://www.hrsa.gov).



Agenda

- Highlights from the issue brief
- Policy strategies to support families
- Panel discussion

Today's Team



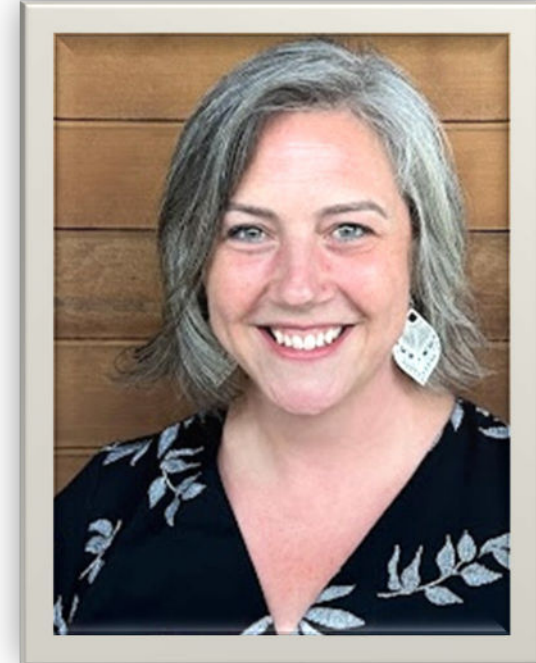
Laura Andrade, PhD

Children Services Administrator III,
Continuous Quality Improvement, Los
Angeles County Dept. of Child and Family
Services



Kimberly Nabarro

Parent Leader, Safe Babies, ZERO TO
THREE and Parent Partner and
Makua Ally, EPIC 'Ohana



Amber Ziring, MPH, MSW

Program Director, Oregon Association of Relief
Nurseries

New From the Safe Babies Policy Team




Safe Babies
A Program of ZERO TO THREE™

Released today!

Foundations of Well-being:
Policy Strategies for Integrating
Infant and Early Childhood
Mental Health into Child Welfare





ZERO TO THREE
Early connections last a lifetime



Safe Babies
A Program of ZERO TO THREE

**Released
March 2024**

Nurturing Development:
Policy Strategies for Perinatal Mental Health
to Enhance Early Childhood Well-being
and Reduce Child Welfare Involvement



ZERO TO THREE
Early connections last a lifetime

Coming Summer 2024

**The Critical Role of Parent
Partner Programs: Policy and
Practice Considerations**

Coming Fall 2024

**Financing the Infant and Early
Childhood Mental Health
Continuum for Child Welfare**

Foundations of Well-being



Safe Babies
A Program of ZERO TO THREE™

Foundations of Well-being:
Policy Strategies for Integrating
Infant and Early Childhood
Mental Health into Child Welfare



Early Childhood Matters

Anyone who touches the lives of babies, young children, and their families can contribute to promoting infant and early childhood mental health.

Infants, toddlers, and young children grow up in the context of relationships that contribute to their physical, emotional, and social well-being





The Opportunity: Integrate IECMH and Child Welfare

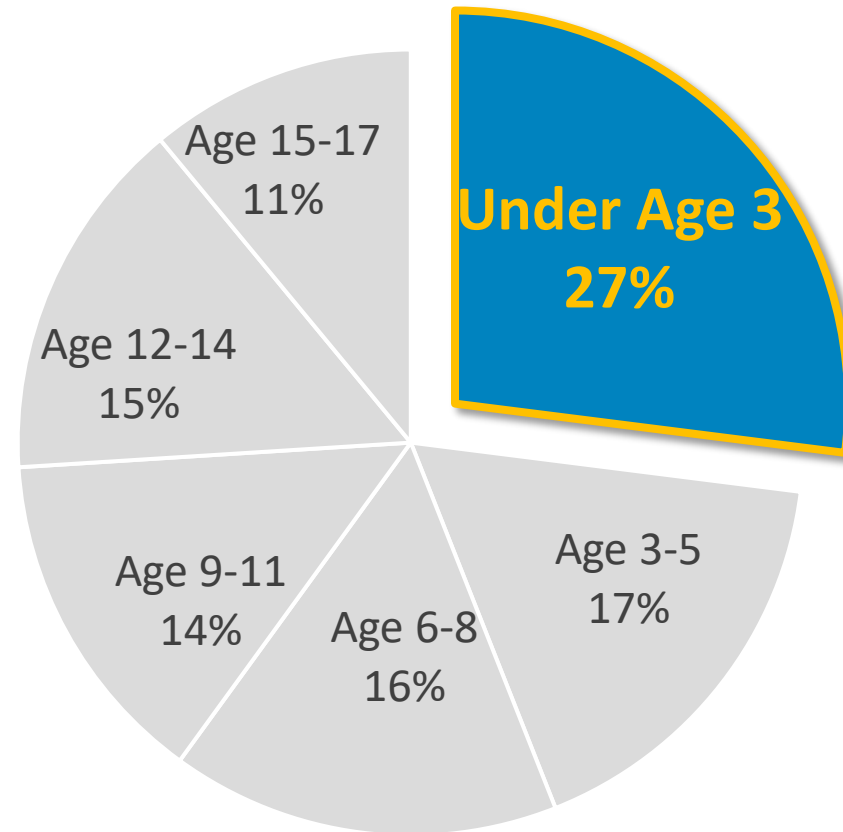
Policy change and public investment in IECMH are critical to ensuring that the basic rights and needs of infants, young children, and their families are upheld.

What the Data Tell Us

Every seven minutes, a baby or toddler is removed from their family due to alleged maltreatment or neglect.

Babies and toddlers are the largest age group in foster care.

% of Children Who Are Maltreated by Age



What the Data Tell Us



Infants and toddlers who are involved in child welfare are not receiving the services they need to heal relationships and form strong attachments.

Just **2.2%** of babies and toddlers in child welfare identified as needing mental health care actually receive these services.

Policy Strategies and Support



A Prevention Continuum

Rooted in and guided by [IECMH Guiding Principles](#) and Best Practices

Critical Considerations for a Robust IECMH Continuum of Care

Promotion and Primary Prevention

Secondary Prevention

Tertiary Prevention

A Prevention Continuum

Rooted in and guided by [IECMH Guiding Principles](#) and Best Practices

Critical Considerations for a Robust IECMH Continuum of Care

Promotion and Primary Prevention	Secondary Prevention	Tertiary Prevention
Screening for IECMH and SDOH		
IECMH Consultation		
Support and Referral Hotlines/Warmlines		
Economic Supports (housing, food, etc.)		
Doula Care, Community Health Worker Approaches, Fatherhood Initiatives		
Care Coordination/Case Management		
Home Visiting		
Parent Mentoring/Peer Support		
Early Care and Learning		



Promotion and Primary Prevention

Secondary Prevention

Tertiary Prevention

Family-based Residential Substance Use Treatment

Infant-Toddler Court Teams

Parent Skills Training/Parenting Support Groups
(nonclinical)

Family Preservation (including in-home stabilization)

Therapeutic Nurseries/Therapeutic Preschool

Respite (planned and crisis)

Mobile Crisis Response System (9-8-8)

IECMH Clinical Assessment/Diagnosis Using DC:0-5
(medical rule out)

Therapeutic Foster Care

Crisis Nurseries

Psychotropic Medication
Monitoring

Family Time*

Psychiatric Teleconsultation
Between Providers

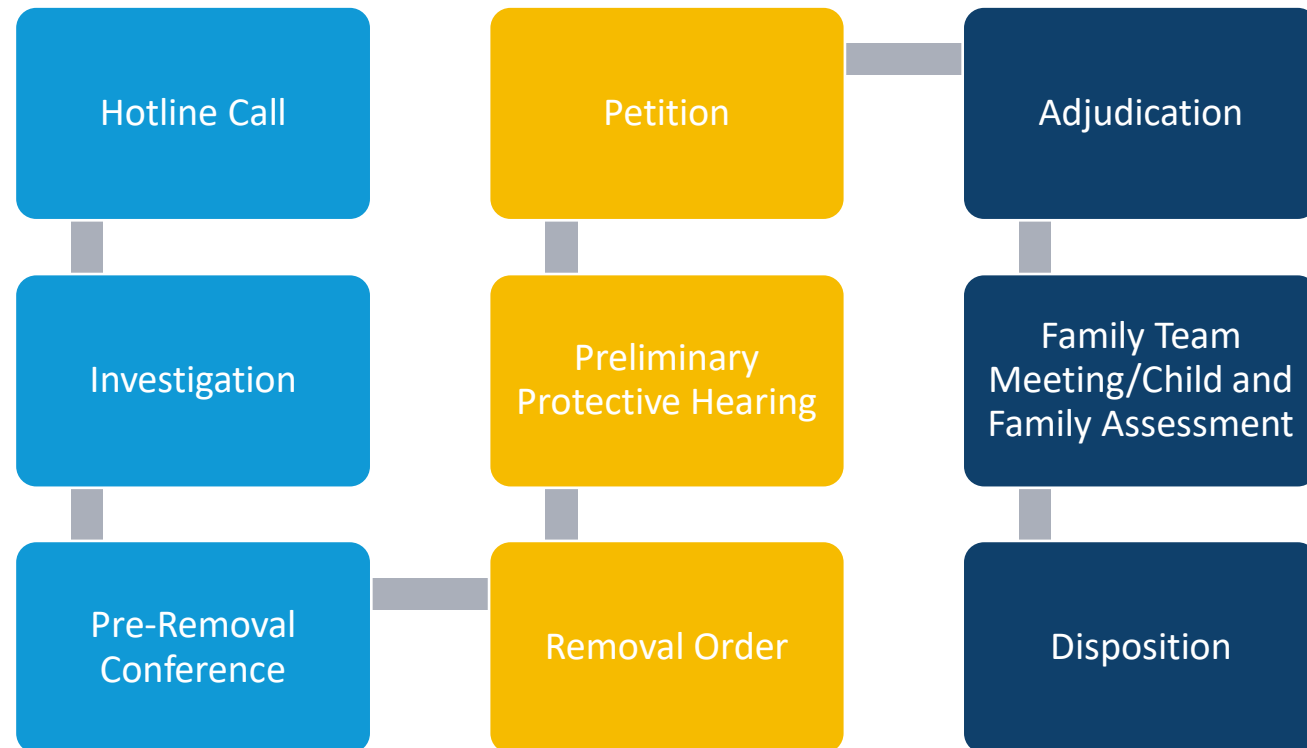
Multigenerational IECMH
Treatment^

A Prevention Continuum

Rooted in and guided by [IECMH Guiding Principles](#) and Best Practices

POLICY STRATEGY: Map out the IECMH service system alongside how families flow into and through the child welfare system.

POLICY STRATEGY: Ensure access to multi-generational IECMH treatments for all families at risk for or already involved in child welfare.

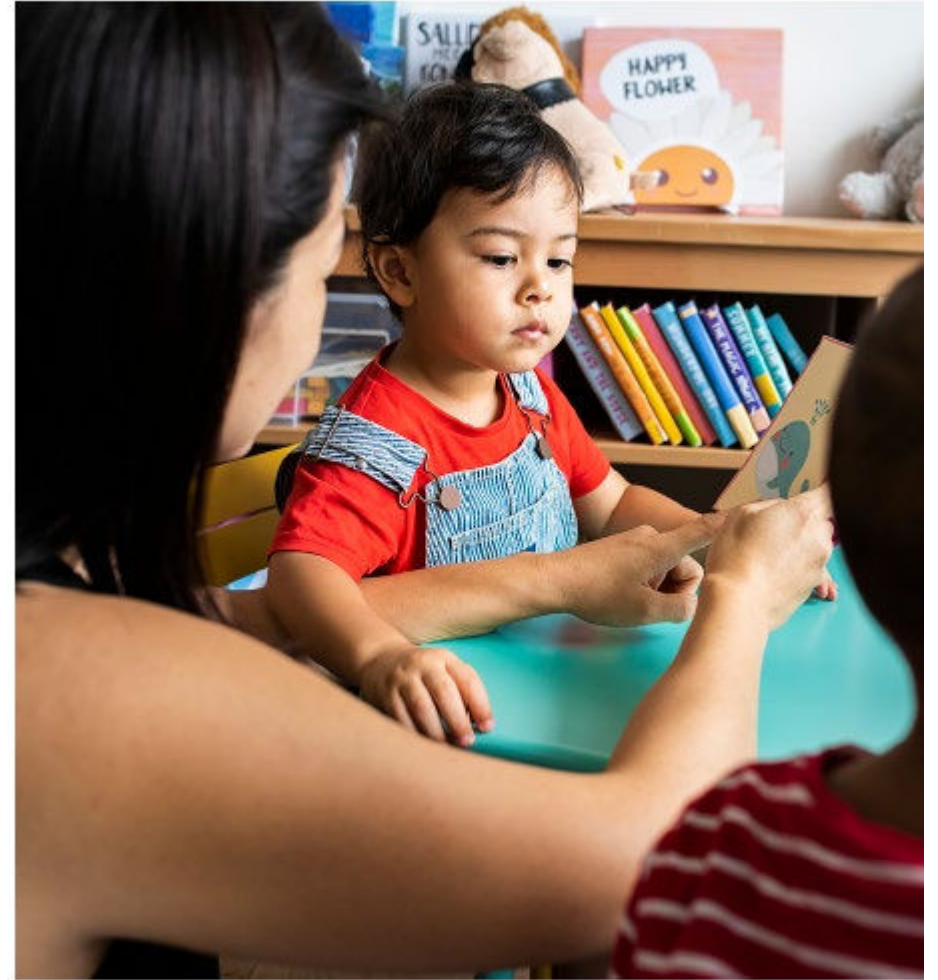


A Prevention Continuum

Rooted in and guided by [IECMH Guiding Principles](#) and Best Practices

POLICY STRATEGY: Build infrastructure to ensure all parents involved in the child welfare system have access to a parent partner/parent peer support during system involvement and following reunification.

POLICY STRATEGY: Implement therapeutic nurseries/therapeutic preschools.



A Prevention Continuum

Rooted and guided by [IECMH Guiding Principles](#) and Best Practices

POLICY STRATEGY: Adapt existing early childhood and adult-serving systems to integrate IECMH across the different points of contact with families with young children, including but not limited to those outlined below.

- By developing or enhancing family-based residential substance use treatment
- Implementing Infant-Toddler Court Teams
- Implementing crisis respite/crisis nurseries



Let's Meet Our Panelists



L.A. County DCFS

Path to Young Children in Care (YCIC) Program Development

- 2005-2010: Developed and managed a mental health assessment program for newly detained youth
- 2010-2014: Participated in several workgroups focusing on B-5 Population
- 2015: Took over the leadership of the Young Children in Care workgroup
- 2016-2017: Advocated for, attended and graduated from the Napa Infant-Parent Mental Health Fellowship
- 2018-2023: Continued to work on developing external collaborations, partnerships, trainings as supported by the CQI division.
- 2023: Received support for and approval to hire two dedicated management staff to focus on supporting Birth to Five practice

Young Children In Care

October 2023

- YCIC becomes a program by hiring two dedicated Birth to 5 (B-5) Program Children's Services Administrators

December 2023

- Developed a B-5 Case Presentation Document
- Launched a B-5 email inbox for Children's Social Workers

February 2024

- Launched B-5 Program one pager
- Launched B-5 Policy - [link to new policy](#)
- Initiated Internal B-5 Advisory Group

On-Going

- Continued external alignment of B-5 community partners
- Continued Training for Trainers at regional offices, as requested
- Continued support to B-5 champion offices
- Continued case consultation support
- Alignment of B-5 and Eliminating Racial Disproportionality and Disparities Workgroup

Young Children In Care
BIRTH TO FIVE PROGRAM
Healthy Development Depends on Healthy & Safe Relationships

BACKGROUND
As of 2022, children aged birth to five make up 30% of the total child population in Los Angeles County; however, they make up 49% of all the new entries into foster care with 23% of those entries being black children*. As of 2024, per the SITE, the consistent average of all open cases in DCFS for this age group has been 40%. Children in this age group are extremely vulnerable due to the critical period of physical and socio-emotional development. However, young children's brains are the most malleable, which means that the earlier we can intervene to strengthen nurturing supportive relationships between children and their caregivers, the more likely we can have a positive impact on their life trajectory.

YCIC BIRTH TO FIVE PROGRAM
The YCIC Birth to Five Program is designed to strengthen emerging practices and policy guidelines around engaging, assessing and servicing newborns, infants, toddlers and preschoolers (ages birth to five) and their caregivers. Staff within this program will be supporting countywide birth to five work, as well as supporting individual office YCIC Birth to Five Program practices. There is a Birth to Five policy coming soon to assist CSWs in better assessing and servicing children and families of birth to five.

Currently, the YCIC Birth to Five Program has begun office-level support in four offices: Palmdale, Pasadena, Belvedere and Vermont Corridor. This support includes building an office-based birth to five program, resource gathering, case presentations, team building, training and more.

In addition, the YCIC Birth to Five Program now has a dedicated email inbox for anyone to contact for support countywide.

ASK THE YCIC BIRTH TO FIVE PROGRAM
birthto5@lacounty.com

- Case Questions
- Resource Questions
- Data and Outcome Questions
- Training Related Questions
- Request for a Case Consultation
- Other Birth to Five Support Questions

Practice Tip: Assessing Social Connections
Everyone needs help in raising children. Who is there to help support the caregiver and child? What do others say about the child's experience with caregivers? Who knows about the safety worries and how can they help?

WHAT'S TO COME
Each service area is uniquely individual. The YCIC Birth to Five office-level framework will be developed in areas where our program can support each office's specific needs. Further, the program will support a countywide transdisciplinary model to bring all county programs and community stakeholders to support the needs of young children and their families. Some areas include, but are not limited to:

- Case Consultation
- Training Support
- Central and Regional Resource Building
- YCIC Birth to Five Office-Level Program Development
- Case Presentation Framework
- Data Collection
- And More!

ABCs
ALL BABIES NEED LOVING AND ATTUNED CAREGIVERS

123s

- 1 Observe, assess & document the relationship between the baby and each caregiver.
- 2 Find ways to strengthen the relationship between the baby and each caregiver.
- 3 When unsure about the relationship, CONSULT.

Practice Tip: Assessing Nurturing & Attachment
Take a closer look at interactions between children and all adults in the home. How does the caregiver show love and support to the child? How does the child respond? How does the parent describe the child?

Delaware Child Welfare Indicators Project | February 8, 2024 | <https://cwbh.lacounty.edu/>

Makua Allies Program



MAKUA ALLIES PROGRAM

Helping Mothers and Babies Stay Together

TOP GOALS

Keeping parents and children together, avoiding separation

Increase parent engagement with community supports and services

Increase parents' sense of hope and self-efficacy

Makua Allies: Building Relationships

Pregnant and parenting women suffering with substance use disorder don't need to hide.

Partner with a Makua Ally and get the support, compassion, and understanding that you need.

We want to help you stay with your baby or develop a parenting plan that best works for you and your family.

Our Makua Ally has lived experience being a pregnant woman scared to lose her child. Makua Allies successfully reunified with their children, changed their lives, and now support others to do the same.

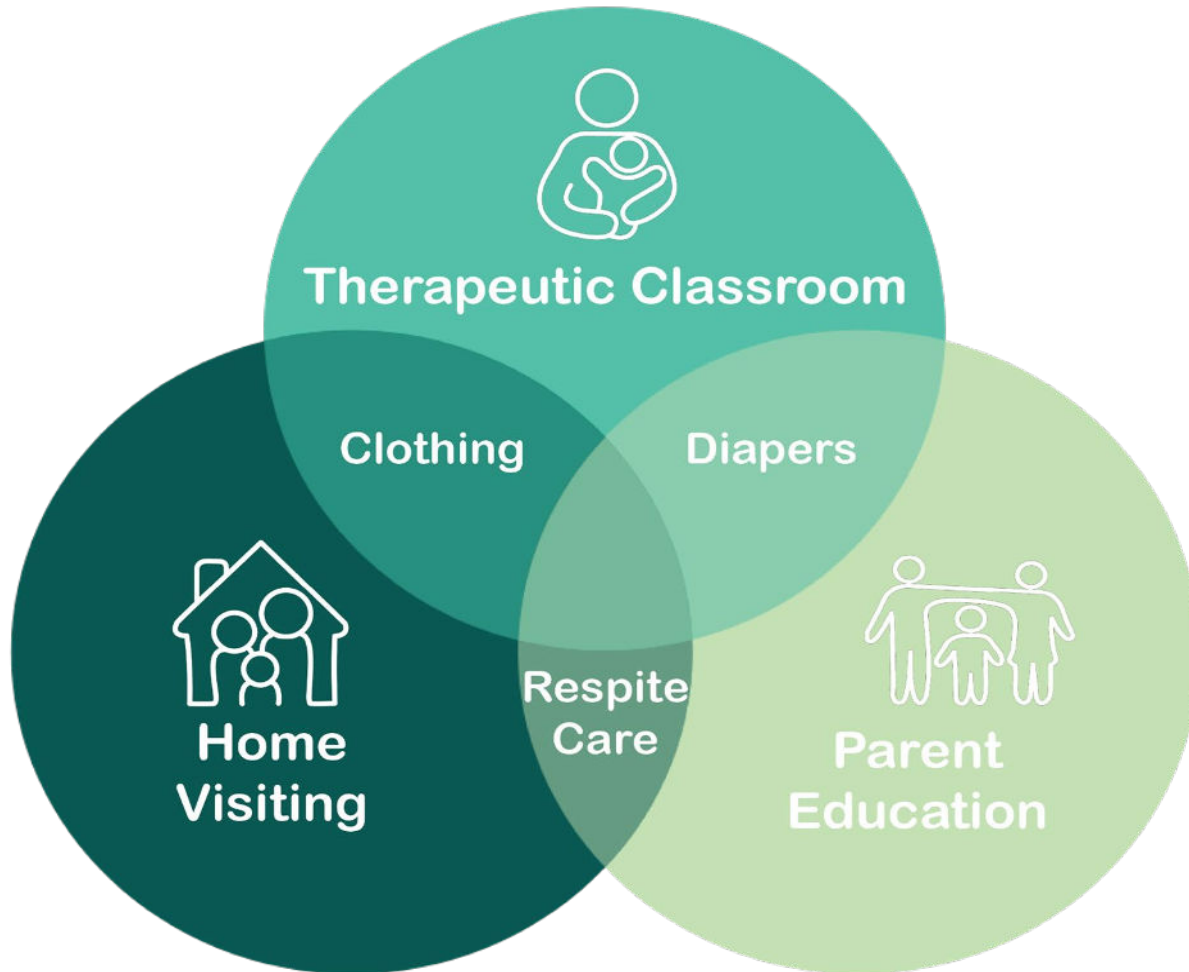
WHO WE SERVE

Pregnant women and women who have delivered in the past 90 days who are suffering with substance use

Together we can solve complex problems through collaboration and systems integration.

Be a partner with us!

Oregon Association of Relief Nurseries



Relief Nurseries

- Relief Nurseries are infant and early childhood mental health programs that partner with parents and caregivers to build lifelong protective capacity and better child outcomes.
- We are fueled by community support and volunteers, seeking to create communities that care for and are invested in young families.

We serve 2300 children and 1700 families annually!

www.oregonreliefnurseries.org

Panel Discussion



Get the new resource



Scan this QR Code!



Thank You!

For questions, contact:

Lisa McGarrie, MSW, LCSW

lmcgarrie@zerotothree.org



Safe Babies
A Program of ZERO TO THREE



ZERO TO THREE
Early connections last a lifetime

