

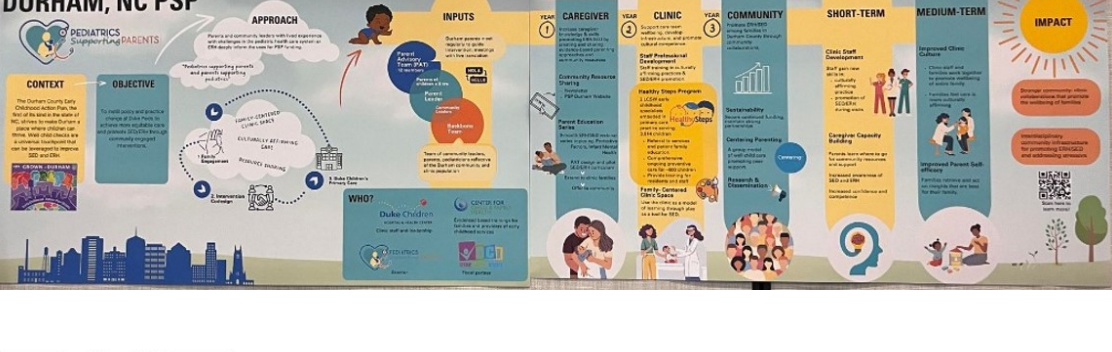
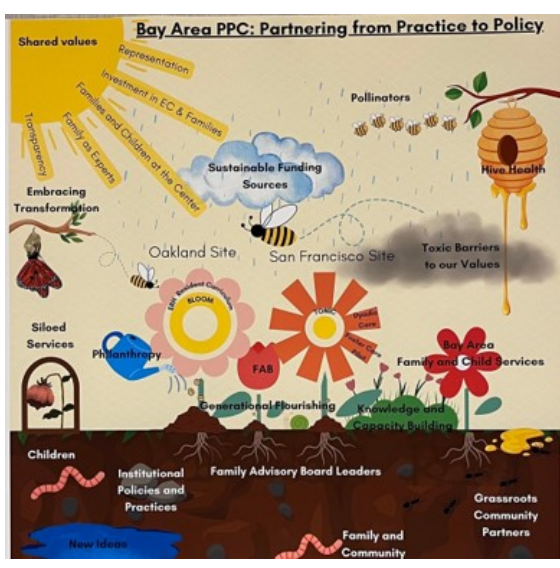


## Highlights from the Field

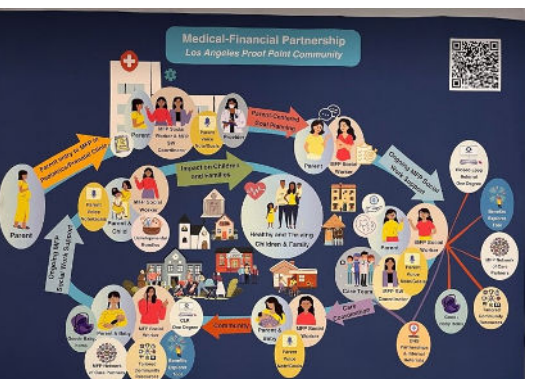
### Did you know...

...47 people including funders, staff, and family leaders from all five PPCs joined together last month for the first ever PSP In-Person Meeting? The Governance Body had time together Monday and the full Learning Community spent Tuesday together in sessions that included exploring power and positionality, story sharing, and a peer input process. Check out the story sharing posters below (and QR codes for accessing more information) from each PPC and the funders:

Bay Area, CA

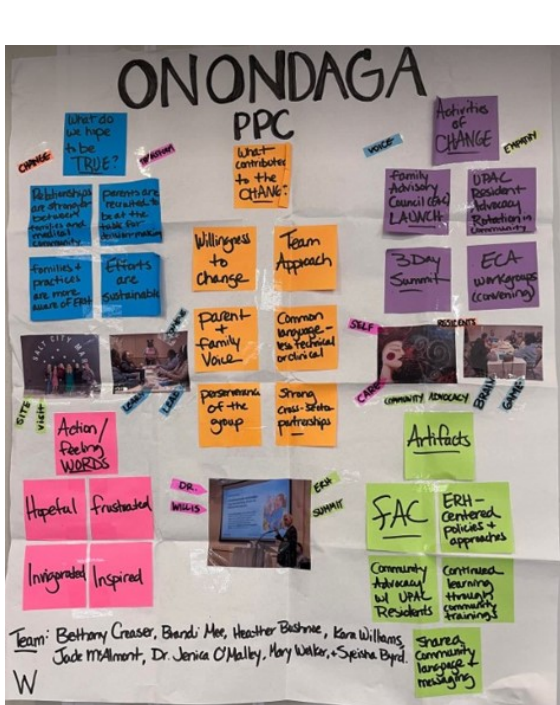


Durham, NC



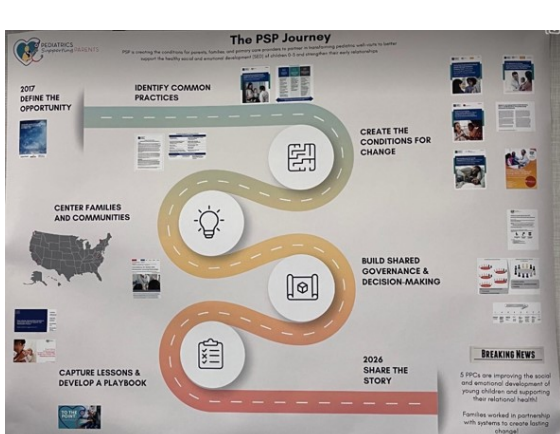
Los Angeles, CA

Onondaga, NY



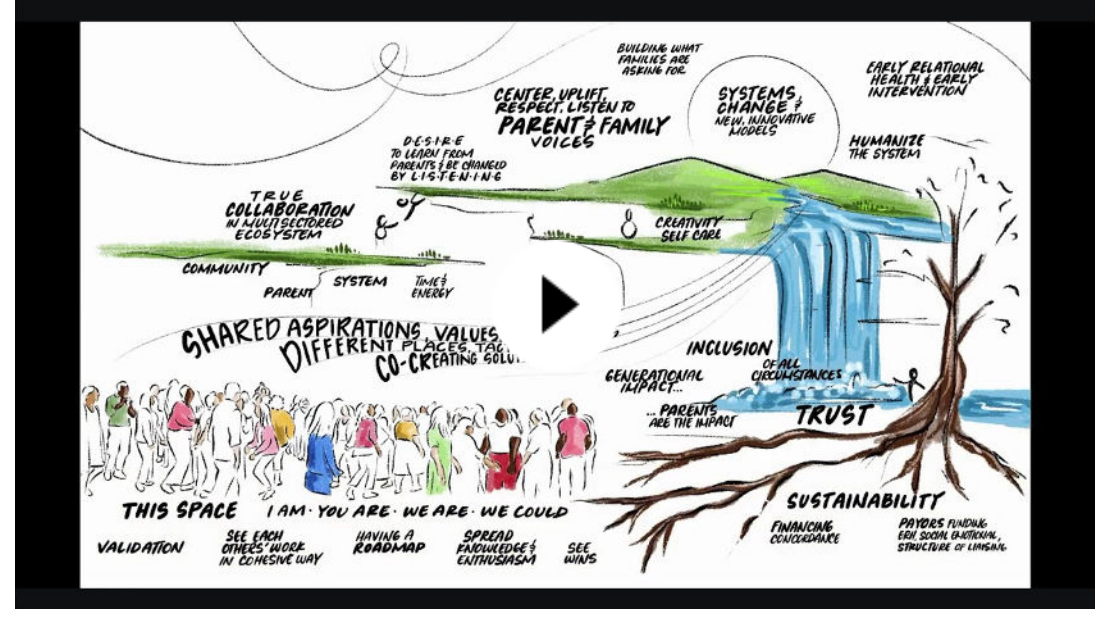
Pierce County, WA

Funders



## Graphic Recording: Our Story

Graphic recorder Rio Holaday not only captured the essence of our time together as a Learning Community at the In-Person Meeting, she conveyed the larger PSP Story in her beautiful drawing. She had her eyes and ears on the team-building session, posters/story sharing, and Peer Input Process to synthesize the common elements, aspirations, and values of the entire PSP Learning Community. *Click below to watch the time lapse video of her creation.*



## Spotlight: Los Angeles Site Visit

Thank you to the Los Angeles PPC for hosting a phenomenal site visit. With an agenda that prompted reflection and connection and a comprehensive tour that highlighted the path a family might take throughout their health system, everyone who attended experienced the innovations and care the LA team provides.



*Pictured above: Participants use yarn to create a visual of the burdensome and repetitive nature of the care coordination process of many health care systems—one that often feels entangling and frustrating for families, providers, and other staff members.*

The LA Team guided guests through their health care system that includes a comprehensive Medical-Financial Partnership (MFP) via four stations:

- 1. Pediatric Clinic Intake & Enrollment:** New patients move through eligibility criteria, contact with a social work coordinator before the visit, comprehensive care during the visit, and post-visit: a Parent Voice Note conversation that is captured for the electronic health record to facilitate ongoing collaboration between the family and their care team.
- 2. The Relationship:** The pediatrics post-visit follow up offers one-to-one social work support that includes longitudinal parent-centered, strengths-based, and Early Relational Health support through collaborative goal planning and action steps. Parent Bundles of baby goods are provided, as well as closed-loop referrals to care partners and local resources.
- 3. Care Coordination:** Families receive MFP social work support to ensure continuity of care and access to any needed resources. The continuity of care provided through one-on-one social work support showed that 92% of parent participants reported that the MFP influenced their decision to continue bringing their child to the clinic.
- 4. Community Partnerships:** The clinic's closed-loop referral workflow connects families to resources via the online platform *One Degree*, including public benefits, food assistance, housing, legal & financial services, and childcare & parenting support. This approach ensures families get connected to more of the resources for which they are eligible.

## Resources

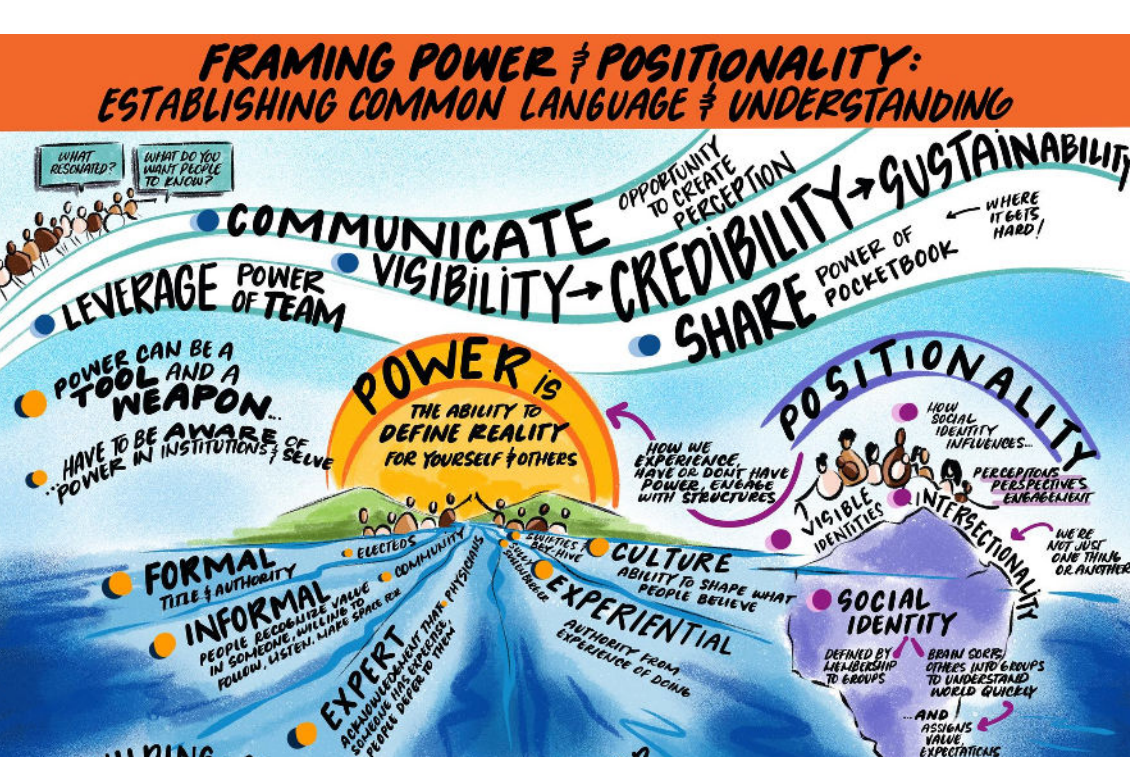
### Collective Impact

As lifted up during the In-Person Meeting, a large part of the PSP story is about connection, collaboration, co-creating, and systems change—all of which are foundational elements of Collective Impact. Explore the resources below to see if there is helpful information to enhance your change efforts.

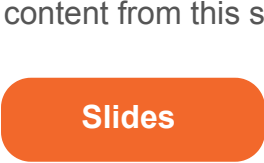
- The podcast, *The Necessary Skills to Navigate Change*, from The Collective Impact Forum covers the relevant topics of collaborative leadership, operationalizing equity, and sustaining change.
- This article from Tamarack Institute: *Collective Impact 3.0: An Evolving Framework for Community Change* discusses the foundations for change, authentic community engagement, and creating a "container for change."
- Tamarack Institute also offers a comprehensive *Guide to Building Sustainable and Resilient Collaborations* if you'd like to take a deeper dive into collaboration and sustainability.

### Power and Positionality

At the In-Person Meeting, the Learning Community Day included a session on Power and Positionality—continuing our commitment to this topic and the broader one of power sharing. Rio also captured a separate graphic recording for this session:



Click the button if you were not able to attend the In-Person Meeting or would like a refresher on the content from this session:



### In Case You Missed It: Power Sharing Webinars

Resharing the webinars below since they are so relevant to our continued DEIAB focus with specific attention on *Redefining Power Dynamics in Communities, Healthcare Systems, and Philanthropic Practices*. They feature Dr. Allysa Ware, Hope Williams-Burt, Dr. Ellie Erickson, and Mónica Beltrán, Ira Hillman, and Elizabeth Krause.

- [2024 Collective Impact Action Summit](#)
- [2023 Grantmakers in Health](#)

### Upcoming TA Opportunities

- **Communities of Practice (CoP)** monthly meetings will be held virtually starting next month.
  - Family Partnership CoP will meet via Zoom **Wednesdays of the month from 1:00-2:30 PM ET/10:00-11:30 AM PT** from September 2024 through March 2025 (skipping January due to the holiday).
  - Evaluation CoP dates are confirmed: We will meet via Zoom **third Wednesdays of the month from 1:00-2:30 PM ET/10:00-11:30 AM PT** from October 2024-January 2025. Registration information coming soon!
- **Individualized Technical Assistance with ZERO TO THREE** is always available upon request—please reach out to Sarah MacLaughlin ([smaclaughlin@zerotothree.org](mailto:smaclaughlin@zerotothree.org)) if you have specific needs.